

# AGENDA

**Meeting:** AMESBURY AREA BOARD  
**Place:** Antrobus House, 39 Salisbury Rd, Amesbury SP4 7HH  
**Date:** Thursday 28 January 2016  
**Time:** 7.00 pm

---

Including the Parishes of Allington, Amesbury, Berwick St James, Bulford, Cholderton, Durnford, Durrington, Figcheldean, Great Wishford, Idmiston, Milston, Newton Toney, Orcheston, Shrewton, Stapleford, Steeple Langford, Tilshead, Wilsford Cum Lake, Winterbourne, Winterbourne Stoke, Woodford and Wyllye.

---

**The Area Board welcomes and invites contributions from members of the public. The chairman will try to ensure that everyone who wishes to speak will have the opportunity to do so.**

If you have any requirements that would make your attendance at the meeting easier, please contact your Democratic Services Officer.

**Refreshments and networking opportunities will be available from 6:30pm.**

---

Please direct any enquiries on this Agenda to Shirley Agyeman Democratic Services Officer, on 01225 718089 or email [shirley.agyeman@wiltshire.gov.uk](mailto:shirley.agyeman@wiltshire.gov.uk)

All the papers connected with this meeting are available on the Council's website at [www.wiltshire.gov.uk](http://www.wiltshire.gov.uk)

Press enquiries to Communications on direct lines (01225) 713114 / 713115.

---

## Wiltshire Councillors

Mike Hewitt (**Vice Chairman**)  
John Noeken  
John Smale (**Chairman**)  
Ian West  
Fred Westmoreland  
Graham Wright

Bourne and Woodford Valley  
Amesbury East  
Bulford, Allington & Figcheldean  
Till & Wyllye Valley  
Amesbury West  
Durrington & Larkhill

## **RECORDING AND BROADCASTING NOTIFICATION**

Wiltshire Council may record this meeting for live and/or subsequent broadcast on the Council's website at <http://www.wiltshire.public-i.tv>. At the start of the meeting, the Chairman will confirm if all or part of the meeting is being recorded. The images and sound recordings may also be used for training purposes within the Council.

By entering the meeting room you are consenting to being recorded and to the use of those images and recordings for broadcasting and/or training purposes.

The meeting may also be recorded by the press or members of the public.

Any person or organisation choosing to film, record or broadcast any meeting of the Council, its Cabinet or committees is responsible for any claims or other liability resulting from them so doing and by choosing to film, record or broadcast proceedings they accept that they are required to indemnify the Council, its members and officers in relation to any such claims or liabilities.

Details of the Council's Guidance on the Recording and Webcasting of Meetings is available on the Council's website along with this agenda and available on request.

If you have any queries please contact Democratic Services using the contact details above.

## Youth Projects

**6:30-7pm** - The Community Youth Officers and Community Engagement Manager will be available to discuss:

Grants and youth grants  
Starting a project or club with children and young people  
Support in Wiltshire  
Signposting  
Information on policies and DBS checks

- 1     **Welcome and Introductions** **7.00pm**
- 2     **Apologies for Absence**
- 3     **Minutes** (*Pages 1 - 8*)  
  
To confirm the minutes of the meeting held on 3<sup>rd</sup> December 2015
- 4     **Declarations of Interest**  
  
To receive any declarations of disclosable interests or dispensations granted by the Standards Committee.
- 5     **Chairman's Announcements** (*Pages 9 - 16*) **7.05pm**  
  
The Chairman will introduce the announcements and invite any questions.  
  
Public Transport Review  
Your Care Your Support  
Army Basing Briefing
- 6     **Local Housing Panels in Amesbury** **7.10pm**  
  
Eamon McClelland, Tenancy Participation Officer, will give a presentation on Local Housing Panels taking place in the Amesbury area.

- |    |   |        |
|----|---|--------|
| 7  | <p><b>Updates from Partners and Town/Parish Councils</b><br/> <i>(Pages 17 - 34)</i></p> <p>To receive updates from the Town and Parish Council Representatives, and from other partner organisations, including outside bodies on which the Area Board is represented.</p> | 7.25pm |
| 8  | <p><b>Police and Crime Commissioner - Precept consultation</b></p> <p>The Police and Crime Commissioner will present on proposals on the precept consultation for the forthcoming financial year.</p>   | 7.40pm |
| 9  | <p><b>Local Youth Network Update and Youth Activities Grant Applications</b></p> <p>To receive an update from the LYN and consider any applications for youth funding</p>   | 7.55pm |
| 10 | <p><b>The new Dorset and Wiltshire Fire and Rescue Service</b></p> <p>The Chief Fire Officer or his representative will give a presentation on how the new Dorset and Wiltshire Fire and Rescue Service will operate when it comes into force in April 2016.</p>            | 8.10pm |
| 11 | <p><b>Community Area Grants</b> <i>(Pages 35 - 40)</i></p> <p>To determine the applications for Community Area Grant funding.</p>   | 8.25pm |
| 12 | <p><b>Community Engagement Manager update</b></p> <p>Update from the CEM on any local issues.</p>   | 8.35pm |
| 13 | <p><b>Good Neighbour Scheme</b> <i>(Pages 41 - 44)</i></p> <p>To explore options for the Good Neighbour Scheme when the contract expires in March 2016.</p>   | 8.40pm |
| 14 | <p><b>Update from the Community Area Transport Group (CATG)</b></p> <p>To consider an update and recommendations from the Community Area Transport Group (CATG) in relation to the funding available towards Local Transport Projects.</p>                                  | 8.50pm |

15 **Urgent items**

Any other items of business which the Chairman agrees to consider as a matter of urgency.

16 **Future Meeting Dates, Evaluation and Close**

**9.00pm**

The next meeting of the Amesbury Area Board will be held on 24 March 2016 at Figheldean Village Hall at 7.00 p.m.



# MINUTES

**Meeting:** AMESBURY AREA BOARD  
**Place:** Antrobus House, 39 Salisbury Rd, Amesbury, Salisbury SP4 7HH  
**Date:** 3 December 2015  
**Start Time:** 7.00 p.m.  
**Finish Time:** 9.00 p.m.

---

Please direct any enquiries on these minutes to:

Shirley Agyeman, Democratic Services Officer, Tel: 01225 718089 or (e-mail) [shirley.agyeman@wiltshire.gov.uk](mailto:shirley.agyeman@wiltshire.gov.uk).

Papers available on the Council's website at [www.wiltshire.gov.uk](http://www.wiltshire.gov.uk)

---

## **In Attendance:**

### **Wiltshire Councillors**

Cllr John Smale (Chairman), Cllr Mike Hewitt (Vice Chairman), Cllr John Noeken,  
Cllr John Smale (Chairman), Cllr Ian West, Cllr Fred Westmoreland and Cllr Graham Wright

### **Wiltshire Council Officers**

Shirley Agyeman (Democratic Services Officer)  
Adam Brown (Senior Democratic Services Officer)  
Dave Roberts (Community Engagement Officer)  
Jenny Bowley (Community Youth Officer)  
Gemma Howell (Assist. Community Youth Officer)

### **Town and Parish Councils**

Amesbury Town Council –  
(Rob Yuill, Paddy Allen, Richard Allen, John Swindlehurst)  
Durrington Town Council - Cllr Marion Wardel, Sarah Tucker  
Berwick St James Parish Council - Neil McDougall  
Winterbourne Parish Council - Mavern Atkinson  
Shrewton Parish Council (Darren Henry)  
Newton Tony Parish Council (Chris Andrews, Tim Milts)  
Stapleford Parish Council (John Sibbs)  
Steeple Langford Parish Council (Richard Coward)

**Partners**

Police – Commander Christian Lange

MOD Boscombe – Group Captain Tom Lyons, Gareth Evans

Woodford Village Hall Committee - Helen Coombe

Girl Guides - Marianne Matthews, John Glover, Christine Glover

Wylve Age UK - Tim Cox

GNC - Jan Tidd

Amesbury Youth Café & Wessex Communities Circus - Jonathan Jester

Andy Tidd – Resident

**Total in attendance: 35**

---



<u>Agenda Item No.</u>	<u>Summary of Issues Discussed and Decision</u>
79	<p><u>Welcome and Introductions</u></p> <p>The Chairman welcomed everyone to the meeting of the Amesbury Area Board and thanked Antrobus House for hosting the meeting.</p> <p>At the Chairman's invitation, the Councillors introduced themselves.</p>
80	<p><u>Apologies for Absence</u></p> <p>An apology for absence was received from:</p> <ul style="list-style-type: none"> <li>• Carol Slater – Chairman of Shrewton Parish Council</li> </ul>
81	<p><u>Minutes</u></p> <p><b>Decision</b> The minutes of the meeting held on 1st Oct 2015 were agreed as a correct record and signed by the Chairman.</p>
82	<p><u>Declarations of Interest</u></p> <p>There were no declarations of interest.</p>
83	<p><u>Chairman's Announcements</u></p> <p>The Chairman referred to the announcements included in the agenda pack.</p> <ul style="list-style-type: none"> <li>• Army Re-basing Briefing</li> <li>• NHS Health Checks</li> <li>• Health &amp; Wellbeing</li> <li>• Community Transport South Wiltshire</li> <li>• Extra care in Amesbury</li> </ul>
84	<p><u>MOD Boscombe Down</u></p> <p>Group Captain Tom Lyons gave a presentation on the activities and opportunities at MOD Boscombe Down. An overview was given of the organisation's set up and the different units that it comprises. Group Captain Tom Lyons considered that running projects like the test pilot school and a host of others played a vital role in directly</p>

	<p>supporting front line military activity.</p> <p>Cllr Mike Hewitt questioned QinetiQ's involvement with MOD Boscombe Down and whether it was in contact with the Amesbury Town Council. Group Captain Tom Lyons responded that though MOD Boscombe Down was in a partnership arrangement with QinetiQ the latter's operations and activities were independent; he would therefore pose the question to the appropriate channels and convey a response.</p>
85	<p><u>Updates from Partners and Town/Parish Councils</u></p> <p>The Chairman referred members to the written updates included in the agenda pack.</p> <p><u>Update from the Police</u></p> <p>Sector Commander Christian Lange gave a general overview of policing in the Amesbury area. He noted that there appeared to be an increase in violent crimes and vehicle thefts within the area and that the police were closely monitoring the situation. With almost £17m lost in the current policing budget and the reduction in the number officers from 1200 to 1000, Sector Commander Lange advised that there was going to be a significant change in neighbourhood policing. A new model of neighbourhood policing, currently being trailed in Trowbridge, would be rolled out in Amesbury from about June 2016. Given all the above, the reduction in the size and numbers of neighbourhood teams and partner agencies working with the police to protect vulnerable people in the area was also a major source of concern.</p> <p>Cllr John Noeken raised questions about the preparedness of the police in handling the extra 7000 soldiers being deployed into the area as part of the government's army rebasing project and proceeded to thank the police for their work with school traffic.</p> <p><u>Amesbury Fire Service</u></p> <p>Cllr Ian West commented on a recent fire incident at Shrewton and the timely response of fire brigades and response teams deployed to the scene. Councillor Noeken noted that with the anticipated increase in population and households especially in light of the army rebasing project, it was important to question whether the Amesbury fire brigade was well resourced to deliver the service expected by the public. Members felt it would be helpful for the Area Board and parish councils to engage with the Amesbury Fire Brigade to explore what assistance could be offered.</p> <p><u>Town and Parish Councils</u></p> <p>There were no updates from the town and parish councils.</p>
86	<p><u>Local Youth Network (LYN) Update</u></p> <p>Jenny Bowley, Community Youth Worker, referred to the reports and grant applications in the agenda pack.</p>

The Area Board considered recommendations from the Local Youth Network and applications for youth funding.

Members' comments regarding these applications were that given the limited resources available there was the need for the Area Board to seek other sources of grants and funding for continued support of projects. Members considered it important that grant applications from villages were not forgotten as large numbers of youth lived in these areas as well.

**Resolved:**

**To defer the award of £4,500 to Avon Valley College as per the LYN management group recommendation.**

**To grant Avon Valley College £450 towards the football leaders course as per the LYN management group recommendation.**

**To refuse the award of £4,026.25 to Bourne Valley Explorer Scouts as per the LYN management group recommendation.**

**To grant Durrington town Council £12,158 as per the LYN management group recommendation.**

A presentation was given by Miss Gemma Howell on the role of Community Youth Workers highlighting some of the positive activities that had been organised for the youth. She also gave an overview of how the grants application process worked. Becky Lock from Durrington Town Council, agreed by talking the meeting through her experiences of applying for youth grant funding to support young people from Durrington.

The Chairman thanked Gemma and her team for all the hard work being done noting that there are more young people participating in activities organised. Councillors also commended the Police for organising activities that engaged young people notably the 'Bluez 'N' Zuz' disco which clocked a record 144 young people from Amesbury. Sponsorship and funding was being sourced from local businesses to support these activities

Janet Tidd coordinator for the Good Neighbour Scheme applauded all that was being done for young people however raised concerns about what provision there was in the budget for older and vulnerable adults. Dave Roberts, CEM noted that most projects ongoing were revenue based and would not be considered as a new project qualifying for funding and that the Area Board would positively consider any grant application that was capital based.

The need to be more creative in sourcing funding was discussed including the prospects of collaborating with town and parish councils on funding issues.

87	<p><u>Youth Conference</u></p> <p>Jenny Bowley referred to the report in the agenda pack highlighting the outcomes of the Youth Conference mainly as:</p> <ul style="list-style-type: none"> <li>-Mental health issues for youth accessing levels of care and the role the Area Board could play to help.</li> <li>-Transport problems with bus passes and getting more volunteer drivers.</li> </ul> <p>Dave Roberts announced that a transport work committee was being set up to help the problem of getting people from the more remote areas into the youth café and clubs.</p> <p>Councillor Fred Westmoreland observed that Wiltshire had a lot more vulnerable families closer to the threshold household income of £17K – which indicated poverty; councillors and officers had to be aware of this to target funding and activities very carefully.</p>
88	<p><u>Delegated Authority</u></p> <p>The Area Board considered a resolution delegating authority to the Community Youth Officer to grant funding to support positive activities for young people and to the Community Engagement Manager to grant funding to support community projects.</p> <p><b>Resolved:</b></p> <p><b>That in respect of urgent matters that may arise, the Community Youth Officer, in agreement with the Chairman and Vice- Chairman of the Area Board, may authorise expenditure to support youth projects from the youth budget of up to £5,000 in total between meetings of an Area Board.</b></p> <p><b>That in respect of urgent matters that may arise, the Community Engagement Manager, in agreement with the Chairman and Vice- Chairman of the Area Board, may authorise expenditure to support community projects from the delegated budget of up to £5000 in total between meetings of an Area Board.</b></p>
89	<p><u>Working Group Updates</u></p> <p><u>Speed Indication Devices (SIDs)</u></p> <p>Cllr Graham Wright gave an update on SIDs informing the meeting that two devices had been applied for and he was seeking joint Parish applications to reduce training costs.</p> <p>There were no updates from other parish councils. The Chairman noted the attendance of parish representatives at the meeting.</p>
90	<p><u>Community Area Transport Group (CATG)</u></p>

	<p>The Chairman referred members to the written updates included in the agenda pack.</p> <p>Cllr Mike Hewitt noted that there were no recommendations to vote on. The biggest challenge facing CATG was with contractors not meeting timescales.</p> <p>Cllr John Noeken thanked CATG for work done on the Church of England School scheme.</p>
91	<p><u>Funding</u></p> <p>The Area Board considered applications for community grant funding to support positive activities in the community and agreed the resolution detailed below.</p> <p><b>Resolved:</b></p> <ul style="list-style-type: none"> <li><b>-To grant Girl Guiding Wiltshire South Berwick Management Committee £5,000 towards a multi-purpose building;</b></li> <li><b>-To Grant Woodford Village Hall £5,000 towards a storeroom extension</b></li> <li><b>-To grant Bourne Valley Explorer Scouts £1000 to provide shelters</b></li> <li><b>-To grant Amesbury Juniors Football Club £996 for training equipment</b></li> <li><b>-To grant Woodford Parish Council £5,000 for new play equipment for Middle Woodford play area.</b></li> <li><b>-To grant the Councillor-led initiative for £1,000 to enable volunteers to undertake MIDAS minibus training.</b></li> </ul>
92	<p><u>Urgent items</u></p> <p><u>Good Neighbourhood Co-ordinator</u></p> <p>The Area Board was advised that current contractors have been given their notice of redundancies and the contract will be ending as of 1<sup>st</sup> April 2016 with Wiltshire Council then delegating the funding for the scheme to Area Boards to manage. Cllr Mike Hewitt raised the need to make interim arrangements to bridge the gap between when the current contractors finish and when the new scheme begins.</p> <p>Cllr John Noeken proposed that the next ABC meeting for Councillors be used to discuss this in detail.</p> <p>Proposals on the future of the Good Neighbourhood Scheme coordinator would be sought and considered at the next area board meeting.</p> <p><u>Other</u></p> <p>Cllr Graham Wright also informed the meeting about a need for permanent signage at</p>

	<p>various locations to raise awareness of thefts in the area.</p> <p>The issue regarding the lack of leaders for ex-offenders working in the communities was also raised noting that the service had been stopped because of the lack of leaders.</p>
93	<p><u>Future Meeting Dates</u></p> <p>It was noted that the next meeting of the Amesbury Area Board would be held on 28 January at 7pm at Antrobus House.</p> <p>The Chairman thanked everyone for attending.</p>

## Chairman's Announcements

<b>Subject:</b>	<b>Wiltshire Passenger Transport Review</b>
<b>Officer Contact Details:</b>	<b>Passenger Transport Unit- 0300 456 0100/ <a href="mailto:passengertransport@wiltshire.gov.uk">passengertransport@wiltshire.gov.uk</a></b>
<b>Weblink:</b>	<a href="http://consult.wiltshire.gov.uk/portal">http://consult.wiltshire.gov.uk/portal</a>

Wiltshire Council is undertaking a review of Wiltshire Council supported bus services.

This is part of a wider review of all areas of Wiltshire Council's passenger transport remit.

Although passenger transport makes a strong contribution to the priorities that underpin Wiltshire Council's Business Plan, a key challenge in recent years has been how the service can continue to achieve these priorities in the face of growing pressures on local authority spending. This review is therefore being undertaken to help identify savings from passenger transport budgets.

Roughly half of bus routes in Wiltshire are operated with the need for financial support from Wiltshire Council. Services with fewer passengers, weekend and evening, or remote services require more support. Many other local authorities have already made savings from reducing or withdrawing subsidised bus routes.

The Council has already completed a pre consultation assessment, (details can be found via this link ([www.wiltshire.gov.uk/localtransportplan3](http://www.wiltshire.gov.uk/localtransportplan3))).

We will now undertake a broader consultation to hear the views of residents. The Council has made no decisions and would like to see how far you agree or disagree with the presented options, or alternatively suggest your own. Consultation documents can be viewed from the 11 January 2016 on the Council's consultation portal <http://consult.wiltshire.gov.uk/portal>.

Hard copies of the consultation material including questionnaires will be available at local libraries and at main council offices from the 11 January 2016. Questionnaires will also be available on buses operating a journey that is funded by Wiltshire Council, and can be sent out on request.

**The consultation will be open from 11 January 2016 to 5pm on the 4 April 2016.**

If you have any queries, please contact us using the details:

By email to: [passengertransport@wiltshire.gov.uk](mailto:passengertransport@wiltshire.gov.uk)

Public Transport Survey  
Passenger Transport Unit  
Wiltshire Council  
County Hall  
Bythesea Road  
Trowbridge  
Wiltshire  
BA14 8JN  
Tel. No. 0300 456 0100





## Chairman's Announcements



<b>Subject:</b>	<b>Your Care Your Support Wiltshire</b>
<b>Officer Contact Details:</b>	<b>Dr. Sara Nelson: Information and Communication Officer, Healthwatch Wiltshire.</b>
<b>Weblink:</b>	<b><a href="http://www.yourcareyoursupportwiltshire.org.uk/home/">http://www.yourcareyoursupportwiltshire.org.uk/home/</a></b>

### Summary of announcement:





Healthwatch Wiltshire is working in partnership with Wiltshire Council to manage and develop *Your Care Your Support Wiltshire*, the new health and social care information website for the county. As part of this work, Healthwatch Wiltshire has regularly engaged with local people to make sure that the website reflects their need for good quality, comprehensive, and accessible health and care information.

The website went live on April 1<sup>st</sup> 2015 and is still evolving. This is really exciting as it means that Wiltshire people have a chance to be part of its future growth.

The website contains:-

-  Information about different health conditions as well as care services. For example, dementia, keeping well, help to live at home, carers.
-  A service directory that provides details of support and help in the community as well as local clubs, societies and organisations, GPs, dentists and care homes.

We need your help:-

-  To identify the groups, clubs and societies that exist in your area
-  To encourage them to register their details on the service directory
-  To tell us about other types of health and care information you would like to see on the site.
-  Get involved in our discussion groups and readers panels so you can have your say in how the website develops or just contact us and tell us what you think.

**Help us to help you find all the information you need about health and social care in one place.**

For more information call Healthwatch Wiltshire on 01225 434218 or email [contact@healthwatchwiltshire.co.uk](mailto:contact@healthwatchwiltshire.co.uk)



# Chairman's Announcement

<b>Subject:</b>	<b>Army Basing Briefing for the Amesbury, Pewsey, Tidworth and Warminster</b>
<b>Officer Contact Details:</b>	<b>Kevin Ladner, 01225 713220/ Kevin.ladner@wiltshire.gov.uk</b>

## Background

*The government's Army Basing announcement in March 2013 advised of around 4,300 extra Service personnel moving to Wiltshire by the end of the decade. They will be accompanied by their families, bringing the total number of additional people estimated to be moving to the area to 7,600. These plans will require additional levels of infrastructure and services to be provided by Wiltshire Council. **The MOD has recently reviewed the figures as the relocations draw nearer and now expect the net addition of Service personnel to total 4,000. Accordingly the expected net increase in population will be a little over 7,000.***

## January 2016 Update

### Planning Applications

DIO continues to progress its planning applications for the Army Basing Programme (ABP).

All three major applications for the Service Family Accommodation (SFA) housing developments across the basing area have been submitted by the Defence Infrastructure Organisation (DIO). The applications can be viewed online on [Wiltshire Council's planning web-pages](#). They will provide a total of 917 family homes across Bulford, Ludgershall and Larkhill in addition to the purchase of 100 homes at Tidworth. They will be considered in the New Year.

DIO and Wiltshire Council are both keen to finalise the s106 agreement which will confirm the proposed MOD contributions to infrastructure to support the planning applications. There are other detailed planning issues to be resolved following the comments received during the consultation period. For example, DIO is working closely with Wiltshire Council and other statutory authorities to ensure the requirements of the River Avon Nutrient Management Plan and the Salisbury Plain Water Management Strategy are met. The MOD is addressing these matters and expect to have further details at the end of January which should resolve the matters raised and enable the three SFA applications to be determined via the Strategic Planning Committee and the main development within the camps through delegated powers, soon thereafter.

Plans for the main redevelopment within the camps at Ludgershall, Tidworth, Bulford and Larkhill have been submitted and are currently being assessed by Wiltshire Council. The planning application for the work required at Upavon which will see a number of new buildings and extensions to existing buildings to provide additional training, living, mess and technical facilities, is due to be submitted in March 2016. The Upavon site entrance will also be improved for better access to and from the site.

### Strategic Defence and Security Review (SDSR)

The government has recently published its SDSR (entitled: *National Security Strategy and Strategic Defence and Security Review 2015 - A Secure and Prosperous United Kingdom*). The paper sets out the direction of the MOD for the next five years. It confirms that the government will increase the MOD's budget by 3.1% in real terms to 2019-20 as part of its commitment to spend 2% of GDP on defence. In particular it confirms

# ***Chairman's Announcement***

the regular army will be maintained at a force of 82,000 as was announced in the Army 2020 review in 2012 and the Army Basing plans to relocate the final army units from Germany to the Salisbury Plain area by 2020.

## 5 RIFLES Relocation to Bulford and School Places

5 Rifles will relocate to Wiltshire during the summer of 2016 from Germany, as planned. Accordingly, the planned expansion of schools (St Leonard's and Kiwi) required to cater for 5 RIFLES' relocation and other places needed for increases in population not attributed to Army Basing is progressing. Planning permission on the two applications submitted by Wiltshire Council has now been granted, which will enable the expansion works to continue to schedule. That for St Leonards Primary (Bulford) was obtained on 29 September and planning permission for Kiwi Primary was granted on 17 December 2015. Additional places will be available at St Leonard's for the final school term in this academic year (i.e. April 2016), with work having commenced on site in November 2015, and at Kiwi by summer 2016, in time for the children of the families from 5 RIFLES. A series of liaison visits are planned in 2016 for the families to visit Wiltshire and Wiltshire Council and other authorities to present to families in Germany so they can register for education, health and other services.

## St Michael's Primary School

As announced at the last area board, the MOD has confirmed that the final units relocating to Wiltshire from Germany under the ABP will arrive in 2019. Wiltshire Council had been planning the transfer of St Michael's Primary school to Larkhill by 2017, should the MOD have sought to accelerate its moves under the programme. As the new building will be designed and built to accommodate the additional school children from Germany as well as existing classes from the Figheldean premises, it has been decided to arrange completion for 2018. Conceptual plans of the new school have been drawn up by architects, commissioned by Wiltshire Council. It is understood that the governors of the school will be holding a meeting for parents and local people in late January 2016 where these plans will be available for viewing and further information on the school will be provided.

## Community Infrastructure

The local Steering Group (SG) comprising Ludgershall Town Council, Wiltshire Council, the NHS, local health surgeries, MOD representation and the Community Engagement Manager met on 18<sup>th</sup> November to consider what type of community groups or activities could be accommodated in the building within Corunna Barracks which is being provided by MOD as part of the s106 contributions. To date ideas include facilities for early years, a police office, welfare, a medical room for the local GP surgery, council chamber and meeting rooms. Another meeting will be held in January 2016. Wiltshire Council has agreed to provide modest funding to adapt the building to meet the needs of its future use. It is hoped to have the facility available when the first families move to the Ludgershall SFA site. The group is seeking grant funding to support the facility.

## Chairman's Announcements

*(Updated Population Data from the MOD in Respect of the Army Basing Programme )*

Location	SLA Pop	SFA Population			Total
		Military	Spouses	Children	
Larkhill	1,297	688	688	987	3,660
Bulford	414	267	267	473	1,421
Tidworth	316	25	25	38	404
Perham Down (Ludgershall)	414	223	223	386	1,246
Upavon	126	78	78	103	385
<b>Total</b>	<b>2,566</b>	<b>1,281</b>	<b>1,281</b>	<b>1,983</b>	<b>7,111</b>

*(Source: MOD revision to Masterplan issued 27 Nov 2015)*

**SFA to be provided:**

Location	SFA units	Notes
<i>Lark hill</i>	<i>444</i>	
<i>Bulford</i>	<i>227</i>	<i>This includes 36 units that will replace existing SFA, so the net new requirement is 191 for the Army Basing Programme.</i>
<i>Ludgershall</i>	<i>246</i>	
<i>Tidworth</i>	<i>0</i>	<i>The MOD is acquiring 100 units from a commercial development in Tidworth - (Riverbourne Fields to meet the Army Basing Programme requirements).</i>
<i>Upavon</i>	<i>0</i>	
<b>Total</b>	<b>917</b>	<i>Taking into account the above two notes , the net Army Basing requirement is for <b>981</b> SFA homes.</i>



## Crime and Community Safety Briefing Paper Amesbury Community Area Board January 2016



### 1. Neighbourhood Policing

**Sector Commander:** Christian Lange  
**Team Sgt:** Tina Osborn

#### **Amesbury Town**

Beat Manager – PC Lucy Smith  
PCSO – Wendy Leat  
PCSO – Levy Morphy

#### **Amesbury Rural**

Beat Manager – PC Ivor Noyce  
PCSO – Shona Maycock

#### **Durrington, Larkhill & Bulford**

Beat Manager – PC Jayne Wilby  
PCSO - Will Todd

### 2. NPTs - Current Priorities & Consultation Opportunities:

Up-to-date details about Neighbourhood Policing Teams including team membership, current priorities and forthcoming community consultation events can be found on our Wiltshire Police Website.

□ Visit NPT website at: [www.wiltshire.police.uk](http://www.wiltshire.police.uk)

### 3. Performance and Other Local Issues

The overall crime figures for the Amesbury Community Area Community area continue to remain stable and all crime types are at a level that we would expect. Over the past year we have seen a rise in violent crime which reflects a pattern seen across the rest of Wiltshire. It is good to see that theft offences have reduced over the past year in the Amesbury Community Area.

Over recent months, there has been increasing concern regarding the use of illegal off-road vehicles on Salisbury plain. The vehicles are often uninsured and in a dangerous condition. We have been working with our partners in the MOD to tackle this problem which has resulted in over 40 fixed penalty tickets being issued in the past three months.

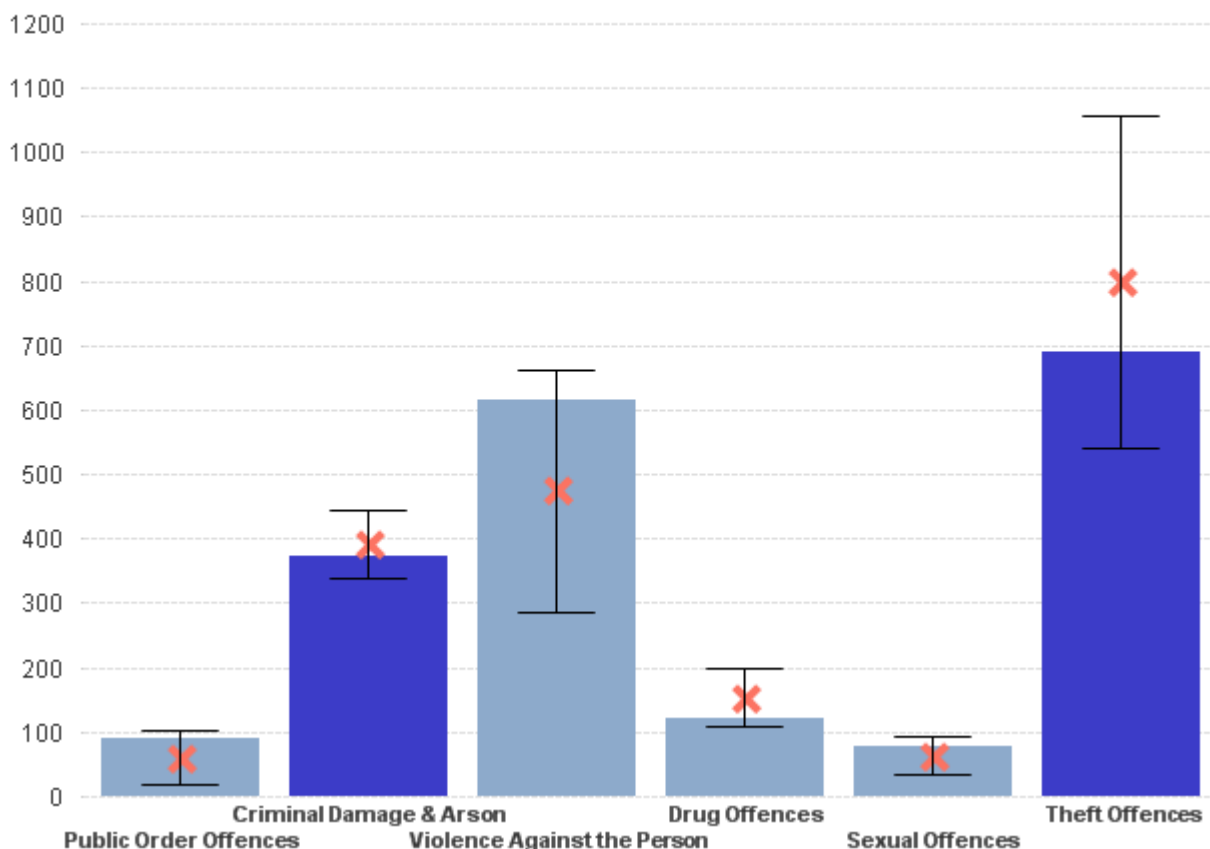
We are advising members of the public to be vigilant when handling money as we have received a large number of reports of counterfeit £20 notes being used in the South of Wiltshire and Hampshire. A male was arrested last week for this offence and is presently on bail pending further enquiries.

As mentioned in previous newsletters, we are concerned about the supply of controlled drugs to young people. This was identified as a priority by the Neighbourhood Tasking Group meetings. We have recently submitted a bid to the Drug Forfeiture Fund in order to part fund a drama & video project aimed at educating young people about the dangers of drug use. The Drug Forfeiture Fund comes from assets that have been confiscated from drug dealers. Funding for the project has also been requested from the Amesbury and Tidworth Local Youth Network funds.

I will be retiring from the Police Service in March 2016 having completed 25 years service in both the Wiltshire and Metropolitan Police Forces. I have very much enjoyed being the Sector Commander for this area over the past 4 years and have worked with some very dedicated people in that time. Inspector David Minty, who is presently the Sector Commander for the Salisbury area will also be looking after the Amesbury area.

Inspector Christian Lange  
Amesbury Police Station

**Crime figures for 12 months to January 2016 compared to last year**







## **Wiltshire Fire & Rescue Service briefing for Community Area Boards January /February 2016**

### **Responsibility for fire and rescue policy has moved from the Department for Communities and Local Government to the Home Office.**

The Government has a manifesto commitment to deliver greater joint working between the police and fire service, and it recently consulted on proposals to enable Police and Crime Commissioners to take on greater responsibility for fire services at local level.

Mike Penning has assumed responsibility for the portfolio, becoming Minister for Policing, Fire, Criminal Justice and Victims. He said: "As a former firefighter and now Minister for Policing, I know from first-hand experience how well the police and fire service can work together. We believe that better joint working can strengthen the emergency services and deliver significant savings and benefits for the public. This is about smarter working, reducing the cost of back office functions and freeing up the time of front-line staff."

"This move will have benefits for both services. Fire authorities can learn from the journey that police forces have undertaken on reform over the last five years. Equally, the success of fire and rescue services in prevention holds important lessons for the police."

### **Fire Service asks drivers to 'mind the gap'**

Would a fire engine be able to get to your house in an emergency? That's the question Wiltshire Fire & Rescue Service is asking local people.

A fire engine needs clearance of 10ft (three metres) to pass safely. Streets congested with parked cars can delay fire engines and other emergency service vehicles attending an incident.

With more and more households having more than one car, the Service is becoming increasingly concerned that fire crews could be seriously delayed getting to an emergency incident because of inconsiderate parking.

Anyone parking on the roadside is asked to:

- Park tightly to the kerb
- Leave enough space for a fire engine or an ambulance to pass
- Leave extra room near tight corners – and never park right on a junction
- Observe double yellow lines – they are often there to ensure turning space for larger vehicles
- Fold in your wing mirrors

The Service is now running 'Mind The Gap', an awareness campaign into the dangers of inappropriate parking, with fire crews carrying out leaflet drops in areas where problems are frequently reported.

## Road Safety news

The Wiltshire & Swindon Road Safety Partnership comprises of Wiltshire Council, Wiltshire Police, Swindon Borough Council and Wiltshire Fire & Rescue Service.

They are working towards the following locally agreed targets.

\*KSI – Killed or Serious Injuries

40% reduction in all KSI's\*

50% reduction in Child KSI's\*

10% reduction in Slight Injuries

These are to be achieved by 2020 and are based against the base averages between 2004-2009.

For the last full year of published statistics in 2014 there were 1574 recorded collisions which resulted in 2157 casualties of which 31 were fatal. The overall cost of these casualties to the community is estimated to be £125 million (*Department for Transport*)

**2015 statistics** Published statistics for 2015 currently up until the end of July show 18 fatalities and a total of 884 casualties

	Jan	Feb	Mar	Apl	May	Jun	Jul	Totals
<b>Fatal</b>	2	1	1	2	2	3	7	18
<b>Serious</b>	18	20	15	21	30	23	24	151
<b>Slight</b>	188	128	94	129	128	150	185	1002
<b>Total:</b>	208	149	110	152	160	176	216	<b>884</b>

### Killed and seriously injured stats for vulnerable road users

	Fatal	Serious	Slight
<b>Motorcycle</b>	6	36	81
<b>Pedestrian</b>	1	26	91
<b>Pedal Cycle</b>	2	21	73
<b>Horse Riders</b>	0	0	1
<b>Children &lt;15</b>	1	8	74

### Wiltshire & Swindon Road Safety Partnership Activities

The Partnership uses the police statistics above to set their campaigns and education priorities over the following 12 months. They also follow and support the national campaigns.

The Partnership receives no direct funding and works because of the commitment of each agency to reduce casualties through prevention work.

Michael FRANKLIN

Partnerships & Community Engagement Manager (Wiltshire Council area)

January 2016

**NOT PROTECTIVELY MARKED**

**NOT PROTECTIVELY MARKED**



## January 2016

### New provider for adult community health services in Wiltshire

Wiltshire Clinical Commissioning Group has awarded Wiltshire Health & Care the contract to provide adult community health services in Wiltshire for the next five years.

Wiltshire Health & Care is a new organisation formed by Great Western Hospitals NHS Foundation Trust, Salisbury NHS Foundation Trust and Royal United Hospitals Bath NHS Foundation Trust.

The new contract is due to start in July 2016, and will mark the start of an exciting period of change, where more care will be delivered closer to local communities, people will be supported to maintain independence and reliance on hospital services will be reduced.

As part of the CCG's five year plan to bring health care closer to home, the changes to adult community health services will ensure that the focus is very much on patient centred care with GP practices firmly at the heart of community provision. Delivered through integrated community teams across the county, Wiltshire Health & Care will support Wiltshire CCG to meet the challenges of an ageing population and to enhance partner working across the health economy to provide a health service fit for tomorrow.

### Pilot out of hours service for unwell children

A new pilot service for an out of hours GP service for children has been launched with the aim of avoiding unnecessary A&E attendances. Parents of children aged 0-10 can now book a same day appointment to see a GP at the Salisbury Walk In Health Centre.

The extended service provides health advice and treatment for minor illnesses and injuries and provides parents with a local alternative to A&E when their child is ill and their surgery is closed.

The pilot service, which is already helping to reduce some of the pressure seen at our A&E departments over the winter months, will run until the end of March 2016. It is available for children under the age of 10, and is open Monday to Friday 18:00 – 22:00 and Saturday and Sunday 16:00 – 20:00 by contacting the 111 telephone number.

If necessary, the call handler will advise parents to contact the Walk In centre to make a same day appointment. If however, the child has an obvious serious or life threatening condition; parents are advised to call 999.

### RUH Hopper bus service

In the UK the NHS has a duty to transport patients to hospital and Wiltshire CCG fulfils this duty with the Non Emergency Patient Transport (NEPT) service, which the CCG funds to the tune of £2.3million per annum. The service covers the whole of Wiltshire, transporting patients to the Royal United Hospital, Great Western Hospital and Salisbury Foundation Trust Hospital, and is managed through a contract with Arriva.

Wiltshire CCG has not funded the RUH Hopper Bus Service since 2007.

The NEPT service was introduced in 2007. All bookings are subject to assessment, to ensure the right sort of transport and the required levels of care are provided for patients during their journey. The service is also provided for the patient's carer where their particular skills or support is needed. Where patients are not eligible for NEPT, they are signposted to other suitable transport providers within the community, such as the LINK service.

At its meeting in June 2015 the Joint Commissioning Board (JCB) agreed to provide funding from the Better Care Fund in 2015/16 for the continued operation of the RUH Hopper Bus Service for the remainder of the financial year. This was a temporary solution, with the agreement that the situation would be subject to a review by Wiltshire Council to identify ways of reducing the cost of the service.

Whilst Wiltshire CCG regrets it is not in a position to be able to match-fund the Hopper service with Wiltshire Council, the CCG's position has not changed since the NHS withdrew its funding in 2007. The CCG maintains that the Hopper service does not provide an equitable service for all Wiltshire patients, and is restricted to transporting people to the Royal United Hospital only. The NHS is under intense financial pressure and the CCG has no spare resource to be able to fund the Hopper service as well as the Wiltshire-wide Non Emergency Patient Transport Service, which, as well as taking people to the RUH, also transports people to Salisbury District hospital and Great Western Hospital. Indeed, finding the funds required for the Hopper service would require the CCG to reduce clinical services currently provided for patients.

### House of Lords acknowledge good work of CCG

Lord Prior of Brampton, Parliamentary Under Secretary of State for NHS Productivity has echoed the views of Claire Perry MP in extending his thanks to Wiltshire CCG for improvements made in the delivery of healthcare across Wiltshire.

In his letter to the CCG, Lord Prior specifically alludes to a number of projects, including:

- Creating a dedicated and enhanced GP service for nursing homes to ensure that personal care planning is agreed and managed, and that cases are reviewed more regularly
- Forming local multi-disciplinary teams to support GPs and the primary care sector to help provide comprehensive health and social care treatment to patients
- The development of an extended hours urgent care centre which will provide same-day appointments for patients in Devizes and the surrounding area

Lord Prior applauds the CCGs view that services should move closer to the patient in communities and supports the integration of health and social care. He also commends Wiltshire CCG on its creative use of existing services and best use of resources to dynamically improve the wellbeing of patients and NHS Staff.

### Stay well this Winter campaign

Wiltshire Clinical Commissioning Group are part of the **Stay Well This Winter** national campaign to raise awareness of what you can do to stay healthy this winter and what services are available if you need additional help.

The national **Stay Well This Winter** campaign started on 5 October 2015 and will run until 27 March 2016 and will also be providing advice to those with long-term health conditions, over 65s, pregnant women and parents of under-sevens.

### Get the jab, get Flu Safe

NHS Wiltshire CCG is encouraging people to have their flu jab. Flu is a highly contagious infection that anyone can catch, but it can be very serious for some. For most people flu is a relatively mild illness from which they recover within a week or two – yet every year people, especially those at risk, become seriously ill because they don't get their free flu jab.

Flu is not the same as a cold and it affects people of all ages. If you or someone you care for is in any of the at-risk groups listed below you can get a free flu jab from your GP.

- everyone aged 65 years and over
- all pregnant women irrespective of their stage of pregnancy
- Adults and children over six months with long term heart, lung, kidney, liver or neurological conditions
- people with diabetes
- anyone who has a reduced immunity because of an illness or medical condition
- people with asthma
- anyone in long-stay residential care
- carers of disabled or elderly people and healthcare workers that are in direct contact with patients

Get the best protection for yourself and your family by being flu free this winter and book your appointment today.

### **Staying Healthy this winter**

NHS Wiltshire CCG is urging people to keep warm and well this winter, especially as the nights are starting to draw in and the temperature is dropping.

The cold can have serious consequences as it can increase the risk of strokes and heart attacks as well as causing people to catch colds and flu. Wrapping up warm, keeping the heating turned up, making sure you have enough winter food supplies and keeping a well-stocked medical cabinet in case you do catch a cold or flu are all sensible steps to take.

Some top tips on staying warm and well this winter.

1. Keep your home warm – set your central heating to between 65 and 70 degrees Fahrenheit (18-21 degrees centigrade). Heat the room you sit in during the day to 70 degrees, and your bedroom to 65 degrees. When it's very cold, set the heating to come on earlier so that you're not waiting for your home to warm up.
2. Have your flu jab. Everyone over 65, or with a wide variety of health conditions, is entitled to one free of charge. Immunity takes effect almost immediately, so even though a flu outbreak is currently well underway, you can still protect yourself by getting the jab – just call your GP to make an appointment.
3. If you do fall ill with flu, it's best to stay at home. Flu is caused by a virus, and cannot be treated with antibiotics – so a visit to your GP is not necessarily the best course of action.
4. Vomiting and diarrhoea bugs caused by norovirus are common and very infectious. This can be a very unpleasant condition, but the best advice is to stay at home and drink plenty of fluids until the symptoms pass. Norovirus is highly infectious, with an incubation period of between one and three days. For that reason, you should wait 48 hours after symptoms have stopped before going back to work or your children go back to school.
5. Make sure you have enough winter supplies and keep a well-stocked medicine cabinet, with supplies of ibuprofen, paracetamol and your favourite cold remedy at hand.

Where to go when you're ill - The following points should be helpful when deciding who to contact.

- Pharmacies offer over-the-counter medicines and advice. As well as being open during regular retail hours, they operate an out-of-hours service on a rota basis;
- Call NHS 111 for advice or go to NHS Choices website [www.nhs.uk](http://www.nhs.uk). They can give a wide range of advice and information about many conditions;
- Use the minor injuries units at Chippenham and Trowbridge or the walk-in centres in Swindon and Salisbury for cuts, burns and other injuries – but not for colds, flu or vomiting;
- Make an appointment with your own GP - an out-of-hours service is also available;
- If it is a genuine emergency, go to your local A&E department or call 999 for an ambulance

Keep an eye on elderly or frail friends, neighbours and relatives this winter and join us in helping Wiltshire stay well this winter.



**NHS**  
Wiltshire  
Clinical Commissioning Group

**Do you have a long-term health condition or are you 65 or over?**

---

Make sure you get your prescription medicines before Christmas Eve.  
Because many GPs and Pharmacies will close over the holidays.

---

**STAY WELL THIS WINTER**

Richard Pile



**NHS**  
Wiltshire  
Clinical Commissioning Group

**Do you have a long-term health condition?**

---

If you feel like you're getting a cough or a cold on top of your existing condition, get advice from your pharmacist before it gets more serious.

---

**STAY WELL THIS WINTER**





## Update for Area Boards - January 2016

### The Care Quality Commission (CQC) inspection of The Royal United Hospitals Bath NHS Foundation Trust

The CQC is the independent regulator of health and adult social care in England. Between January and the end of March 2016 the CQC will be inspecting acute hospital services provided by the RUH. It wants to hear from local people about their experiences of services and will have an engagement stall at Trowbridge Library, County Hall on Wednesday 2 March from 11 - 1pm.

If you would like to provide any feedback on your experiences of services, please contact the CQC on telephone 0300 0616161 or email: [enquiries@cqc.org.uk](mailto:enquiries@cqc.org.uk). Alternatively you can contact Healthwatch Wiltshire as we work closely with the CQC to support its inspections.

### Using the arts to engage with local people about their experiences of health and care

With a grant from Wiltshire Council's Arts and Health Innovation Fund, Healthwatch Wiltshire, working in partnership with Wiltshire and Swindon Users' Network, commissioned an Arts and Health Project called "This is me". The aim was to produce something to challenge the people who make decisions about health and social care to think differently about the people who are using those services, especially older people using both health and social care and their unpaid carers.

Elevate, an arts programme from Salisbury Hospital, was selected to deliver this project. They used vintage tea parties, with community groups and in isolated peoples' homes, to encourage people to open up about their experiences. The tea parties included live music, cakes and party activities. Over 100 people took part, and shared a wealth of experiences. Some of these were shared on twitter and can be seen at <https://twitter.com/hwwteaparties>

People reported some very good care, but also some services not being joined up, and difficulties in finding the information that they needed, especially for people who fund their own care. Participants wanted person-centred care, with care visits at the right times for them, by people they had the opportunity to get to know. Issues with hospital transport were raised, and the hard reality of being a carer was also described. A video of the project has been produced and is available at <http://www.healthwatchwiltshire.co.uk/this-is-me>

The findings have been shared with health and council officials and will be used to continue our monitoring of health and social care services.

### Your Care Your Support Wiltshire

Healthwatch Wiltshire, in partnership with Wiltshire Council, has developed a new health and social care information website for the public and professionals. It is called 'Your Care Your Support Wiltshire' - <http://www.yourcareyoursupportwiltshire.org.uk>

Contact us:

Tel 01225 434218

[info@healthwatchwiltshire.co.uk](mailto:info@healthwatchwiltshire.co.uk)

[www.healthwatchwiltshire.co.uk](http://www.healthwatchwiltshire.co.uk)

We would like to know what you think about the website so far and your ideas on what you would like to see on the site. Please tell us about local groups and services that are running in your local area and we will add them to the directory of services. You can get involved in discussion groups, reader's panels or just provide feedback in a one-to-one interview or via email. This is your chance to help build a really useful health and social care website fit for Wiltshire people. You can contact us about the website on: 01225 434218 or email: [contact@healthwatchwiltshire.co.uk](mailto:contact@healthwatchwiltshire.co.uk)



## New specialist nursing team for end of life care

**A new specialist nursing service has started that will give additional support to ward nursing and medical teams who provide end of life care to patients.**

While the Hospital Palliative Care Team currently treat patients who have complex physical, psychological and emotional needs, the new specialist nurses will give extra support to ward staff caring for patients who need less complex support.

They will also have a staff education and training role around the introduction of new personalised care plans.

These ensure that patients who may die within a few days receive clear communication on any decisions, that there is sensitive communication between staff our patients and those important to them and that we take into consideration at their personal needs and act on them.

Lorna Wilkinson, Director of Nursing said: "With an aging population we are seeing more older people with complex conditions requiring hospital care or treatment and some of them may also be nearing the end of their life. It's essential that patients who are coming to the end of their life have the very best all round care that we can provide and our staff have the support they need to do so."

## Volunteers needed to act as ward companions for dementia patients

**Staff are looking for new volunteers who can give up some of their free time to provide companionship to patients with dementia to support them in hospital, as part of a new pilot on Redlynch and Pitton wards.**

While the Trust runs the successful Engage programme, where volunteers increase social interaction for patients through quizzes, discussion groups and memory games, ward companions will act as "friends", giving additional support and company for patients during their hospital stay.

Jo Jarvis, Voluntary Services Manager said: "Our volunteers find the work and time that they give to our patients interesting and rewarding. We are looking for people who have good

communication and interpersonal skills, an approachable friendly and caring manner and would be able to give up around two to three hours a week for a morning or afternoon. Interviews and checks would be carried out, and training provided for successful candidates."

People interested in becoming a ward companion should contact Jo Jarvis, Voluntary Services Manager on 01722 336262, extension 4026 for more details.

## Hospital above average for cleanliness, food and the environment

**Cleanliness, food quality and patients' overall experience of facilities and support have been rated highly in the latest national report on the Patient Led Assessment of the Care Environment (PLACE).**

The national report follows an assessment made by patient and public representatives and modern matrons.

In summary, the scores were:

- Cleanliness – **scored 99.3%** (national average 97.57%)
- Food – **scored 94.57%** (national average 88.93%)
- Privacy, Dignity and Wellbeing – **scored 89.47%** (national average 86.03%)
- Condition, appearance and maintenance – **scored 95.31%**

(national average 90.11%)

- Dementia standards – **scored 84.66%** against a national average of 74.51%.

Ian Robinson, Head of Facilities said "These results are good news for our patients and visitors and reflect the commitment and professionalism of our staff."



## inside this issue...

Staff and patients celebrate three years of mobile chemotherapy

Team Salisbury win military challenge

Salisbury in top 120 healthcare organisations to work

.... and much much more

## Salisbury in top 120 healthcare organisations to work

For the second year running, comments from staff have placed The Trust in the best healthcare organisations in the country in which to work.

The Health Service Journal gathered a range of information from employers and staff and these were then analysed by independent workplace research firm Best Companies Group who used this to benchmark organisations and identify the top 120.

There are over 150 general hospital Trusts in the country and a further 300 community, mental health Trusts and Clinical Commissioning Groups. The publication took into account the results and comments from staff surveys, and a range of information



from the quality of leadership and staff communication and engagement, to the working environment and training and development.

Alison Kingscott, Director of Human Resources and Organisational Development said 'We feel that it's essential that our staff are supported at work, both in the care that they provide for our patients and in their own health and wellbeing, and this again highlights Salisbury as a good place to work and progress a career in the NHS.'

## Self Care and Staying Healthy this Winter

**Hospital staff and local people had an opportunity to find out more about how they can improve their own health and pick up potential signs of serious illnesses during Self Care Week.**

Throughout the week specialist staff were on hand to provide information on a wide range of areas, from how to protect against flu, preventing illness and healthy eating to more specific support around alcohol and stop smoking advice. It was also an opportunity to remind people that their local pharmacy is a recognised source of very good health information and to understand which health service is suitable for their health needs.

More information on how to stay well this winter be found on NHS Choices at [www.nhs.uk](http://www.nhs.uk)

# STAY WELL THIS WINTER

## Salisbury District Hospital to take part in major new National research

**Salisbury District Hospital is one of the first sites in the country to be involved in a major clinical trial in the UK to see whether aspirin can prevent cancers from coming back.**

The ADD ASPIRIN trial will be run in around 100 centres within the country and will involve people who are having, or have had, treatment for early cancer.

Stef Scott, Head of Research said: "This is an excellent achievement for Salisbury and another example of where reputation, local expertise, knowledge and a 'can do' attitude has been recognised enabling us to be one of the first hospitals to offer patients an opportunity to take part in this high profile and important research project."

"In Salisbury we will be looking to involve around 40 to 50 patients a year with their consent, we expect the trial to last around 12 years. Patients who are interested in taking part in the ADD ASPIRIN trial should talk to their doctor, who will be able to consider whether they are suitable for the trial."

## Dementia Community Roadshow

Staff, patients and visitors had an opportunity to visit the Alzheimer's Society's Dementia Roadshow. The aim of the roadshow was to increase local awareness and understanding of the condition which affects more than fifteen hundred people in Salisbury and staff were on hand to provide advice to anyone with queries about the condition, as well as helping to promote the benefits of an early diagnosis.



## Staff and patients celebrate three years of mobile chemotherapy

**As part of Chemotherapy in the Community Week, staff, patients and carers joined the team from Hope for Tomorrow to celebrate the first three years of the Mobile Chemotherapy Unit (MCU).**

The MCU visits locations in Gillingham, Westbury, Ludgershall and Fordingbridge and has so far saved patients over 20,000 hours in travel and waiting time.

Senior Sister Sara Dear said: "Over the last three years we have delivered over 500 treatments for patients in a relaxing and comfortable environment in their own communities, avoiding the stress and strains of travelling long distances to hospital."



## National award for Salisbury blood clot services

Salisbury nurses who assess, manage and treat people for blood clots have won a national Quality in Care (QiC) Programme Award.

The nurse-led Venous Thrombosis (VTE) and Anticoagulation Services cover all aspects of care in this area, with the VTE Service assessing and treating patients in outpatient clinics and the Outreach Anticoagulation Service assessing patients in hospital and providing support and guidance for ward staff.

In this award our staff were “head and shoulders” above the rest, with the judges impressed by the way in which nurses are used in this role.

Lorna Wilkinson, Director of Nursing said: “They were also impressed with our streamlined integrated care



pathway, collaboration with other departments, the assessment of care and the involvement of people who use the service. All supported by a wealth of positive feedback.”

## Annual Flu Vaccination Programme for Frontline Health Staff

Frontline staff are being vaccinated as part of the Trust's programme to protect patients and staff from the virus.

Comprehensive staff vaccination can help reduce the risk of flu spreading across patient areas and affecting vulnerable patient groups. It can reduce staff sickness within the Trust.



Director of Nursing Lorna Wilkinson receiving her flu jab.

## Fundraising continues as Salisbury's first Breast Unit becomes a reality

Thanks to your generous support of the Stars Appeal Breast Cancer Unit Campaign we'll soon be building Salisbury's first dedicated Breast Unit.

Due for completion in summer 2016, the new unit will provide the best possible facilities for patients with dedicated waiting, diagnostic, treatment and counselling rooms. The Breast Team are enjoying working with patients and designers to create a calm, light and dignified environment.

Miss Vicky Brown, Consultant Surgeon and joint chair of the fundraising campaign said: “We have always aimed for the highest standards, but being able to provide

all our outpatient services in a purpose-built environment will make a massive difference by enabling us to provide quicker diagnosis and better, more holistic care.”

The unit will be named after Salisbury's David Brown, (pictured right with the Breast Team) who made a particularly substantial donation to the campaign. The many other generous donors will also be recognised within the Unit and there will be a chance to see the Unit once complete - please get in touch with



## Team Salisbury win military challenge

Staff from Salisbury District Hospital won the South West NHS Military Challenge on Dartmoor. The 10 strong team, including executive directors and clinical and managerial staff, beat 14 other hospitals in seven of the nine challenges. This included the assault course led by the Royal Marines, a number of physical and mental tests and the delivery of care and the building of communication systems under fire. In awarding the team their medals, 243 (Wessex) Field Hospital praised Salisbury's team working and leadership which was really put to the test under the most extreme conditions. The team also raised over £1,500 for the hospital's Stars Appeal.



the Stars Appeal office on 01722 429005 for more details.

People are continuing to support the campaign since the initial target was reached. These vital funds will be used to further enhance the new Unit and to provide extra support to the many local people who will be treated there.

## The Salisbury Hospice

**We all hope for a dignified death when the time comes, and we are fortunate to have in Salisbury a hospice whose job it is to help end of life care needed by patients and their families.**

Our Hospice has been open since 1987, a specialist 10 bedded unit of the hospital with all the usual staff - doctors, nurses, etc. Being on the hospital site is particularly valuable as it gives full access to all the other essential services that the hospital provides. Out of the 155 acute hospitals in England, only 23 have hospices attached.

Salisbury Hospice Charity funds nearly half of the running costs of the unit, and needs to raise £1.5 million each year to do this through donations and fundraising. Neither Macmillan Cancer Care nor Marie Curie has a major presence in South Wiltshire at present.

Built at the south end of the hospital site, the beautifully designed, purpose-built unit has ten inpatient beds and a day care centre, overlooking a garden filled with birdfeeders, a pond and a view across the Chalke valley to Clearbury Ring on the hills opposite. The emphasis is of course on helping patients and their relatives to cope with the difficulties that may arrive at the end of life - physical and emotional pain being a large part of this. So this stress-free and peaceful environment is an essential ingredient for success.

I went to see the Salisbury Art Trail exhibition in the hospice meeting room in early October. One could not help being moved by the lovely sale of paintings, so many done by

patients' relatives. There does seem to be a real feeling of 'family' in the hospice, of calm, and of dignity. The day care centre, open four days a week, and named after our eminent physician Peter Gillam, provides a social meeting place so that patients do not feel alone in their illness. They also have access to all the expertise based at the hospice.

As well as providing care in the hospice itself, there is a specialist outreach team that visits the wards in the hospital and goes out into the community, advising on the care of patients who would benefit from their skills. The community team works alongside GPs and district nurses supporting patients to remain as long as possible in their own homes. In the New Year, Salisbury Hospice Charity will be funding a Hospice at Home service for the next three years, so that specially trained carers will be able to provide hands on care in patients' own homes.

I feel that we are profoundly fortunate to have this unit to call on when needed. It deserves the full support of our community every bit as much as other parts of the hospital.

**For more information, or to make a donation, visit [www.salisburyhospicecharity.org.uk](http://www.salisburyhospicecharity.org.uk), or telephone 01722 416353**

***Dr Alastair Lack***  
**Lead Governor**

## Successful AGM

**Foundation trust members turned out in force again to the Annual General Meeting at the Salisbury Arts Centre to find out more about how the hospital had performed last year and hear specialist presentations from staff in A&E.**

The presentations highlighted the day to day work staff do in A&E and the Trauma Unit which links in closely with the main centre in Southampton. One of Salisbury's strengths is its high quality burns, plastic surgery, rehabilitation and spinal presence on the site, which is an addition and advantage when compared with most other trauma units across the country.

"We enjoy tremendous support from the local community and the turnout once again highlighted the interest people have in the NHS and our local health services," said Nick Marsden, Chairman of Salisbury NHS Foundation Trust.

"While the AGM gave us an opportunity to look at the real challenges that lie ahead, it also enabled us to focus on the good performance throughout the year and celebrate the enormous achievements of our staff. I want to thank all those that came along to this successful event and thank you again for all your support."



**Georgina and baby Henry Chalke of FJ Chalke of Mere who supply the car, and hospital Chief Executive Peter Hill**

## Stars Appeal

A brand new Kia Picanto car worth over £8,000 is the top prize in the Stars Appeal Christmas Raffle. Second prize is £1,000, third prize £500 plus lots more cash prizes! Tickets are just £1 each and you will find two books enclosed. If you would like to buy them, simply fill out and return the stubs, along with a cheque for the appropriate amount (payable to the Stars Appeal), in the enclosed envelope. To help raise as much as possible from the raffle, tickets will also be sent out with other hospital newsletters. If you also receive these, perhaps you would be kind enough to pass the tickets on. If you can help sell tickets, please contact the Stars Appeal office on 01722 429005. Readers of this newsletter helped raise a wonderful £28,000 from last year's Christmas raffle. We hope to raise even more this year. Thank you for your continued support and have a very Happy Christmas.

## Getting in touch...

Get in touch with your Governor by going onto our Website: [www.salisbury.nhs.uk](http://www.salisbury.nhs.uk), click on the Foundation icon, and then Council of Governors. Once there, choose the Governor who represents your constituency, or contact us by post at the following address, Salisbury District Hospital, Trust Offices, Odstock Road, Salisbury, Wiltshire SP2 8BJ.

To help with our costs, where possible we would like to send this newsletter by email. If you are happy to receive it this way, please contact Isabel Cardoso at: [Isabel.cardoso@salisbury.nhs.uk](mailto:Isabel.cardoso@salisbury.nhs.uk), or on tel: 01722 429390.

This document is available in large print, audio tape or another language on request.

## Partner Update for Amesbury Area Board

---

**Name of Parish/Town Council/Partner:** Amesbury Town Council

**Date of Area Board Meeting:** 28/01/16

### Headlines/Key Successes

We are really pleased to report that the construction of the new skate park has begun at Kings Gate.

The project began over a year ago with town council representatives and, more importantly, a local group of young skaters/BMX riders, working together with a designer to come up with a fabulous sunken, concrete skate park.

Funding has come primarily from Bloor Homes through S.106 contributions, although the Town Council has also allocated £28,000 towards the project, since the final design came in over budget.

Thanks must go to Wheelscape, who have provided a very professional service. The designer listened well to the group's ideas, understood their aims, and managed to incorporate all of them into the park.

Although of course we all sympathise with those living in Cumbria, it is due to the flooding there that a 'window' was created to enable the company's next project to be in Amesbury.

Construction should take 6-8 weeks, depending on the weather, so we should be looking at an official opening at the beginning of March. Fingers crossed for good weather.

Looking forward, we will need to provide landscaping and paths, some of which may be covered by Bloor Homes. If not, we could be approaching the Area Board ... ..

Date: 14/01/16







<b>Report to</b>	Amesbury Area Board
<b>Date of Meeting</b>	28/01/2016
<b>Title of Report</b>	Community Area Grant funding

**Purpose of the report:**

To consider the applications for funding listed below

<b>Applicant</b>	<b>Amount requested</b>
<b>Applicant:</b> Brambles Pre School <b>Project Title:</b> Brambles Preschool Charity Building Buy  <a href="#">View full application</a>	£5,000 Total project cost £60,000
<b>Applicant:</b> Avon Valley College <b>Project Title:</b> Avon Valley College wheelchair basketball club  <a href="#">View full application</a>	£4,930 Total project cost £9,860
<b>Applicant:</b> God Unlimited <b>Project Title:</b> Gul Riverside stable yard improvements  <a href="#">View full application</a>	£5000 Total project cost £10,000
<b>Applicant:</b> Milston Parish Council <b>Project Title:</b> Upgrading of footpath gates and kissing gates  <a href="#">View full application</a>	£1,000 Total project cost £2,000

**1. Background**

Area Boards have authority to approve Area Grants under powers delegated to them. Under the Scheme of Delegation Area Boards must adhere to the [Area Board Grants Guidance](#)

[The funding criteria and application forms](#) are available on the council's website.

## **2. Main Considerations**

2.1. Councillors will need to be satisfied that funding awarded in the 2015/2016 year is made to projects that can realistically proceed within a year of it being awarded.

2.2. Councillors must ensure that the distribution of funding is in accordance with the Scheme of Delegation to Area Boards.

2.3. Councillors will need to be satisfied that the applications meet the Community Area Board grants criteria.

## **3. Environmental & Community Implications**

Grant Funding will contribute to the continuance and/or improvement of cultural, social and community activity and wellbeing in the community area, the extent of which will be dependent upon the individual project.

## **4. Financial Implications**

Financial provision has been made to cover this expenditure. If the applications above are awarded, a total of £15,930 will be awarded at this meeting with a match funding of £81,860 levered in from external funding.

Amesbury Area Board has a grant balance of £25,833 prior to this meeting. If all grants are awarded the area board will have a balance of £9,903. One further meeting will take place this financial year.

## **5. Legal Implications**

There are no specific legal implications related to this report.

## **6. Human Resources Implications**

There are no specific human resources implications related to this report.

## **7. Equality and Inclusion Implications**

Community Area Boards must fully consider the equality impacts of their decisions in order to meet the Council's Public Sector Equality Duty.

Community Area Grants will give local community and voluntary groups, Town and Parish Council's equal opportunity to receive funding towards community based projects and schemes, where they meet the funding criteria.

## **8. Safeguarding Implications**

The Area Board has ensured that the necessary policies and procedures are in place to safeguard children, young people and vulnerable adults.

## 9. Applications for consideration

Application ID	Applicant	Project Proposal	Requested
<a href="#">1587</a>	Brambles pre school	Brambles Preschool Charity Building Buy	£5000.00
<p><b>Project Description:</b>            Brambles Building buy. We are currently in the process of buying our building however as a charity we have limited funds. We have yet to finalise the buy and are in the process of trying to raise funds for it. Without the buy we are simply not sustainable the building will go up to tender and on the open market. This will mean that a person will buy for personal use and we will need to relocate. This will mean that Brambles will no longer be able to operate. The buy will mean we can continue to offer our Outstanding preschool education to the children in Larkhill Tidworth, Figheledean, Bulford and Netheravon. If the buy is secured we will look to extend our hours to full time childcare in order to fully help working families who are in need of quality childcare in the area.</p> <p><b>Input from Community Engagement Manager:</b>            There is a shortage of child care places in Amesbury Community Area. This facility has been rated outstanding and is fully supported by WC Child Care Placement Officer.</p> <p><b>Proposal</b>            That the area board considers awarding the funding for this project subject to the following conditions.            That any necessary planning permissions and match funding is in place.</p>			

Application ID	Applicant	Project Proposal	Requested
<a href="#">1439</a>	Avon Valley College	Avon Valley College wheelchair basketball club	£4930.00
<p><b>Project Description:</b>            The project is aimed to set up a Wheelchair basketball club after school to engage all students of any disability or SEN. The students who attend the club will then be trained to deliver sessions and they will offer to coach other groups primary schools Secondary Kids club. We will also organise an IZB festival for the secondary schools in Salisbury, Pewsey, Tidworth and Marlborough.</p> <p><b>Input from Community Engagement Manager:</b>            This project is an innovative approach to delivering an alternative sport. This will be a first for Amesbury Community Area and will act as a pioneer for Southwest Wiltshire.</p> <p><b>Proposal</b>            That the area board considers awarding the funding for this project subject to the following conditions.            That any necessary match funding is in place.</p>			

Application ID	Applicant	Project Proposal	Requested
<a href="#">1620</a>	God Unlimited	Gul Riverside stable yard improvements	£5000.00
<p><b>Project Description:</b> Upgrading driveway to improve disabled access. Installing solar electric lighting to extend opening hours through winter. Installing fencing.</p> <p><b>Input from Community Engagement Manager:</b> This facility is used by many organisations across the community area and is seen as a very valuable asset. If the group is allowed to carry out these upgrades it will enable them to cater for more people and for longer hours. It will also make access for those people with mobility problems much easier.</p> <p><b>Proposal</b> That the area board considers awarding the funding for this project subject to the following conditions. That any necessary planning permissions and match funding is in place.</p>			

Application ID	Applicant	Project Proposal	Requested
<a href="#">1593</a>	Milston Parish Council	upgrading of footpath gates and kissing gates	£1000.00
<p><b>Project Description:</b> We have several footpaths in the village that require replacement of stiles to enable all generations to have access to the countryside. Hence replacing them with kissing gates or a 5 bar gates.</p> <p><b>Input from Community Engagement Manager:</b> This work will be carried out by volunteers in the community with an interest in maintaining access to the countryside. This group is working with WC rights of way officers and the landowners to carry out these improvements. This is a classic example of how local volunteers can assist with bringing about change in the community area.</p> <p><b>Proposal</b> That the area board considers awarding the funding for this project subject to the following conditions. That any necessary permissions and match funding is in place.</p>			

No unpublished documents have been relied upon in the preparation of this report

**Report Author:**

Dave roberts  
Community Engagement Manager  
01249 706380 07979318504  
[dave.roberts@wiltshire.gov.uk](mailto:dave.roberts@wiltshire.gov.uk)

## AREA BOARD PROJECTS AND COUNCILLOR LED INITIATIVES APPLICATION FORM 2015/2016.

<b>Area Board Project</b>
<b>1. What is the Initiative?</b>
Supporting the Neighbourhood Tasking Group to achieve current objectives and priorities
<b>2. Where is the initiative taking place?</b>
(Durrington, Larkhill, Bulford and Fighledean)
<b>3. When will the initiative take place?</b>
January and February 2016
<b>4. What are the Community benefits/evidence of need/links to Community Plan/Community Issue?</b>
Like other area boards, Amesbury Area Board has a Joint Strategic Assessment (JSA) in place. This document identifies policing and road safety as a priority for the area board. Amesbury Area Board has other NTG's to determine priorities for the community. This forum identified the need for signage at beauty spots that have had an increase in crime mainly theft from parked cars and also the issue of unsafe parking at Durrington and Larkhill Schools. Amesbury Area Board would like to support these initiatives with new bespoke signage and the Park Properly Campaign for all local schools.
<b>5. What is the desired outcome of this initiative?</b>
To reduce crime at beauty spots and improve parking at drop off and pick up at local schools
<b>6. Who will Project Manage this initiative?</b>
The NtG Chairman and Community Engagement Manager. This is supported by all councillors in the community area
<b>7. Costs/quotes/ match funding? (total cost £5k require 1 quote, total cost £5k-25k require 3 quotes)</b>
£500
<b>8. Additional information</b>



Amesbury Area Board

Wiltshire Good Neighbour Scheme

28<sup>th</sup> January 2016

Wiltshire Council entered into a partnership with Community First in 2010 to deliver the Good Neighbour Scheme. This partnership comes to an end in April 2016 and the decision has been made not to renew the agreement but work differently by facilitating local wellbeing through the area boards.

Adult Care Commissioners facilitated a series of workshops in each of the County's Area Boards asking older people what kind of services they felt should be available within their community. People wanted better information on what was available in the community and people to help them access support.

Based on this feedback and other events with older people and the voluntary sector it was decided that this responsibility should be devolved to the eighteen area boards and that the Good Neighbours service would no longer be provided through the current contracting arrangements.

In parallel to this, discussions with the voluntary sector will be taking place around how we can better target resources and improve information and advice to people. Healthwatch Wiltshire will help facilitate this discussion.

The new approach will build on the success of local youth networks and will establish a Health and Wellbeing group (HWG) in each area. These groups will include the newly appointed older peoples champion, commissioners, local members and other key representatives from the community.

It is proposed the groups will add to the functions relating to social inclusion and wellbeing previously provided by the Good Neighbours by making recommendations to the Community Area Board on how priorities for funding should be determined.

### ***What this means for Wiltshire Council and Communities***

- Local people will be given a greater say in promoting wellbeing at a community level.
- Health and wellbeing groups will be able to work closely with Healthwatch, commissioners and other key stakeholders to establish local needs and priorities.
- Health and Wellbeing groups can respond to local challenges and make the best use of local assets including local knowledge, resources and voluntary organisations.
- Adult Care Community Commissioners can work closely with members, customers and key stakeholders to respond effectively to local needs while coordinating county wide solutions where required.

- The groups will promote links between universal services (including leisure and libraries) and services that support specific customer groups including older adults or those with a disability.
- It will provide opportunities to access external funds through grant funding and partnership working.

## Proposals

Amesbury Area Board has identified 3 options to deliver a local solution.

### Option 1

To let the termination of the GN scheme take its course. To set up a group consisting of Safe Places, T&PCs, Age UK Health Watch, Adult Commissioning and others who work with older people or provide services such as lunch clubs and day centres. This group will make recommendations to the area board and use the delegated funding to deliver services in the community.

This option will not use any of the delegated funding for a post and will allow full use of funds for services and identified priorities in the community area.

This option will also rely on someone from within the community to coordinate a potentially time consuming task. The focus could easily be lost with other pressures coming into play in the next 12 months.

### Option 2

To seek the services of a person on a self employed basis using all of the delegated funding to work with groups as in option 1 and bring back recommendations to the area board.

This option could potentially use all of the delegated funding allocated to the area board and leave a shortfall to deliver any local recommendations.

This option would then rely on the person appointed to fund raise so therefore putting more pressure on the post and very little delivered at community area level.

### Option 3

To use a proportion of the funding delegated to the AB 70% – 80% to seek the services of a person as in option 2 and to use the other 20%-30% plus any further funds identified to deliver local priorities. This person would work closely with local groups to make recommendations to the AB and also recruit volunteers from within the community to assist with services such as lunch clubs and transport issues.

It is hoped that groups could be supported to access / bid for other grant funding, or other organisations may be able to fund activities (such as parish or town councils). Support to complete bid documentation and business cases may be required.

The benefits of this approach would be that:



- Local decisions on funding are taken at a local level
- Greater likelihood that funding goes towards local community priorities
- Greater engagement by people at a community level

All 3 options above would entail working closely with the Community Engagement Manager, local groups and a councillor nominated from the area board.

It should be noted that the AB is not in a position to employ any people in any capacity at any time.

The area board to consider the 3 options above in more detail and consider any further options that may be brought forward. To consider making recommendations to the meeting in March and review in 6 months time.

